

# Quick Start Guide - ZBALRMB Model # 6002A

Portable/Mountable Pushbutton



Status LED  
(Red/Green)



Pushbutton

## Product Brief

This device utilizes zigbee Pro RF communication to control other zigbee devices and can be easily configured as a doorbell.

The ZBALRMB can be used as a zigbee IAS (Intruder Alarm System) auxiliary control equipment, registered to a CIE (Control & Indicating Equipment) device, and/or bound to ZBALRM as part of a doorbell system. It can be easily wall-mounted or used as a portable remote control within the network. Low power consumption offers a life span of up to 2 years on 2 3V CR2450 batteries.

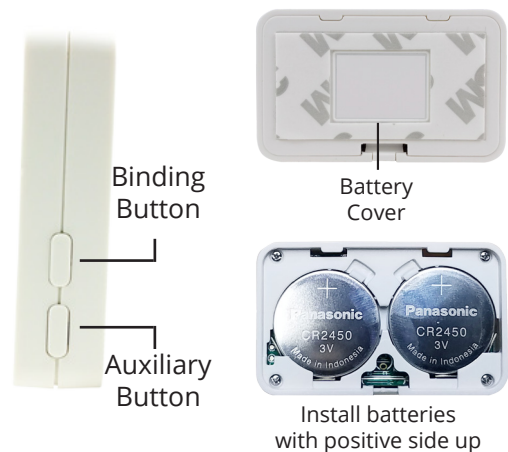
## Installation

### Battery Installation

1. Carefully remove the battery cover on the back
2. Insert the 2 CR2450 batteries (included)
3. Install battery cover. The *Indicator* should flash **once**.

### Wall Installation

1. Use adhesive on the reverse side of ZBALRMB to secure it to a wall



## Set-up

### 1) Factory Reset

- Press and hold both the *Auxiliary Button* and *Binding Button* for 5 seconds.
- Once the Indicator starts rapidly flashing red, release both buttons to complete the reset

### 2) Join Network

- Open a zigbee router or coordinator to permit joining of your ZBALRMB to the network.
- Press the *Binding Button* of the ZBALRMB to turn the device on\*. Status LED will flash **green 5 times** after is has joined successfully.

\* ZBALRMB will go to "sleep" if it doesn't join a network within 15 seconds. Press the *Binding Button* every 15 seconds, until it joins, to prevent this. Do **not** press the *Binding Button* again if the Status LED is blinking **red**, or it will turn off.

### 3) Bind ZBALRMB to IAS Warning device

Binding the ZBALRMB to a zigbee device with the IAS Warning output cluster sets up a direct link between the ZBALRMB and the controlled device, so that the pushbutton can be used to trigger said device.

- Press and hold the *Binding Button* for 3 seconds and then release. The Status LED will flash red once.
- Enable binding on the IAS Warning device you wish to bind to the ZBALRMB within 13 seconds.
- The Status LED will blink **5 times** when successfully bound. If binding is unsuccessful, the Status LED will blink **10 times**.

## Enroll ZBALRMB in Security System

The ZBALRMB will automatically search for a CIE (Control and Indicating Equipment) device with which to enroll upon joining the network. The indicator will flash with the following patterns to indicate registration status.

- **6 blinks** of the Indicator means enrollment was successful
- **4 blinks** of the Indicator means enrollment failed

\*Users can also press and hold the Auxiliary Button for 3 seconds to manually initiate registration\*

## Turn Off ZBALRMB

- Press the *Binding Button* once
- The Status LED will flash red for 5 seconds
- Press the *Binding Button* again before the 5 seconds/LED flashing has expired

## Turn On ZBALRMB

- Press the *Binding Button* once
- The Status LED will flash green 5 times