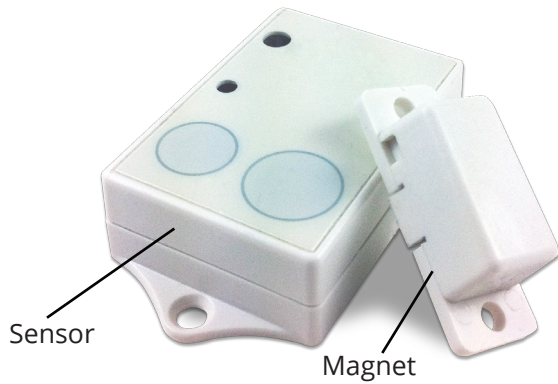




Quick Start Guide - ZBWDS Model #1017A

ZigBee Wireless Window/Door Contact Sensor



Product Brief

The ZBWDS is a convenient set of wireless magnetic contacts used to detect if something is open or closed within ZigBee Home Automation (HA) networks.

Practical applications may include setting a smart thermostat to turn off the A/C or heater when a door is open; causing a smart plug to turn on a light or a chime when a door is opened; or, when used with the Harmony Gateway, send an SMS or email message when a window has been opened.

The ZBWDS also serves as an IAS Zone device to be enrolled as a security zone on a ZigBee central security system (CIE) enabled device.

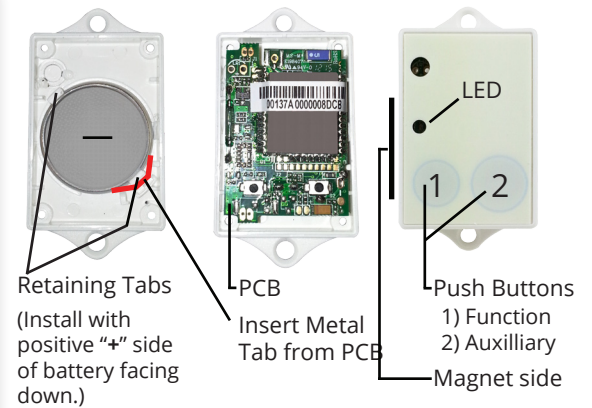
Installation

Install Battery (Type CR2450 3V, included)

- Remove the 4 screws on the back of the ZBWDS and carefully pull apart
- Press the battery in between the two retaining tabs to lock it in place
- Place PCB on battery with metal tab inserted at the bottom right of battery
- Place top piece on, lining up push buttons with micro switches on PCB
- Replace the 4 screws to complete battery installation

Install on Window or Door Frame

- ZBWDS magnet and sensor must be aligned to ensure that both pieces are no more than **1/2 inch (15mm)** and no less than **1/8 inch (3mm)** apart when in the closed position.
- Mount using mounting holes with **1/8 inch (3mm)** screws
- Mount the magnet on the LED side of the sensor (as shown here)



Set-up

Factory Reset ZBWDS

- Press and hold both buttons - first press **Function** and then **Aux** and continue to hold both
- Two **red** flashes indicate that the buttons have been pressed correctly (If green LED flashes at this point, both buttons are not being held)
- Continue to hold both buttons until the **red** LED flashes multiple times, then release

Join ZBWDS to ZigBee HA network

- Enable permit join on a ZigBee coordinator or router
- Press the **Function** button once for initial wake up
- Press the **Auxiliary** button every 5 seconds to "keep awake" (red LED will flash after each press)
 - ZBWDS goes to sleep after 7 seconds to conserve battery life when the device is not joined to a network. If longer than 7 seconds go by, the **Function** button must be pressed once again to wake it up. (Do not press the Function button again if the green LED is blinking, as it will turn the device off)
- The **red** LED will flash **5 times** when it successfully joins to the network

Enroll as a CIE Security Zone Sensor (if applicable)

- If your network supports IAS Zone devices, the ZBWDS will automatically enroll as a zone device
- The ZBWDS's **green** LED will blink 6 times after successfully enrolling as a security zone
- The ZBWDS's **red** LED will blink 4 times if security zone enrollment fails

The status of the ZBWDS will be normal when the magnet is within proximity of the sensor (15mm or less).

When the magnet is separated from the sensor, the status will change to alarm and the **red** LED will blink once.